

LINK-BELT
RTC 8090 *series II*

1-800-500-CRANES



**CONTINENTAL
CRANE CO.**

**EPA/CARB
Tier 3 Compliant
with CA emission
standards**

NEW 90-ton

**Southern California's
Largest One Man Operated
Rough-Terrain Crane**

- 90 ton
- 140 main boom
- 238 max tip height
- 225 HP engine



Main Boom Lift Capacity Chart

28,000 lb Counterweight - Fully Extended Outriggers - 360° Rotation
(All Capacities Are Listed in Pounds)

Radius (ft)	Boom Length (ft)													Radius (ft)
	38	50	66	70	80	90	100	110	120	130	140	142		
8	167,000													8
10	159,000	152,000												10
12	150,000	138,000	108,000											12
15	116,000	118,400	106,500	70,000	78,400	54,200								15
20	65,000	67,500	67,800	63,500	75,500	52,000	45,100	27,200						20
25	56,000	58,000	59,800	54,000	59,500	45,600	43,200	35,800	26,000	26,000				25
30	52,000	55,000	56,100	47,800	55,700	40,600	42,200	35,800	26,000	26,000	24,400			30
35		46,000	46,800	43,000	48,400	36,000	38,000	33,000	26,000	26,000	24,100			35
40		38,400	40,100	36,100	39,000	33,000	34,900	30,400	26,000	26,100	24,000			40
45			34,200	34,500	30,800	30,100	32,100	30,000	26,100	25,000	23,600			45
50				30,500	28,900	28,900	27,600	26,500	27,800	24,100	25,200	23,700		50
55					24,600	24,700	24,700	24,300	23,800	22,300	23,500	22,600		55
60						21,100	21,200	21,000	20,500	20,400	20,700	21,000	21,700	60
65							18,500	18,600	18,600	18,600	19,200	19,000	19,800	65
70								17,400	17,300	17,200	17,400	17,000	16,600	70
75									14,800	15,000	15,000	14,700	14,700	75
80										14,200	14,100	13,700	13,600	80
85											12,600	12,700	12,000	85
90												11,600	11,500	90
95													10,400	95
100														100
105														105
110														110
115														115
120														120
125														125
130														130

This information is not for crane operation. Operator must refer to the in-cab information for crane operation. Rated lifting capacities shown on fully extended outriggers do not exceed 80% of the tipping loads and on trees do not exceed 75% of the tipping loads.



5-section full power latching boom with attachment flexibility

- 38-140 main boom
- Max tip height 238 ft
- Three boom extended modes (EM1 through EM3)
- Optional 35ft one-piece lattice fly
- Optional 35-58 ft two-piece bi-fold lattice fly with 2, 15, 30, 45 offsets
- Optional 16ft lattice inserts
- Boom wear pads (no grease)

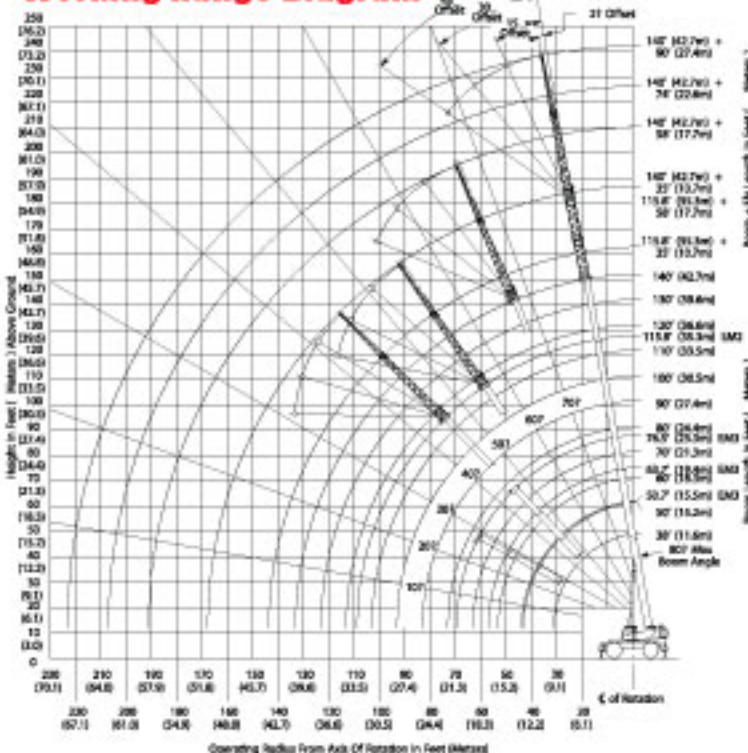


Next Generation Operators cab

- Rated Capacity Limiter - to aid operator in safe and efficient lifting
- Excellent visibility with extra large windows
- A/C Conditioning and heating
- Sliding windows and doors
- Backlit gauges and switches



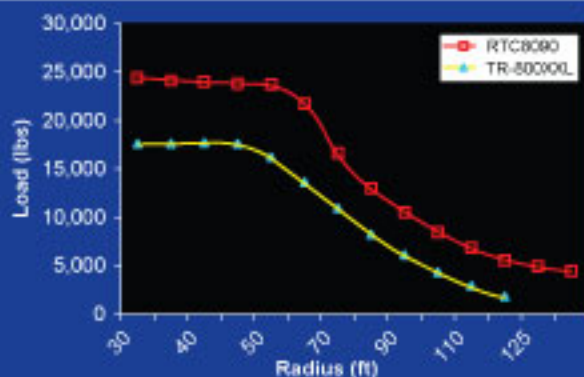
Working Range Diagram



Out Picks the Competition by 30%

Link-Belt RTC8090 vs. Tadano TR800XL

90	----	Tons	----	80
140	----	Boom	----	144
238	----	Max boom	----	212
16'	----	Lattice jib insert	----	0
6 speed	----	Transmission	----	3 speed
16,888	----	Max line pull	----	15,200



Job Site Maneuverability

- CALC - Outrigger beams have three different stages (retracted, intermediate, and fully extended) providing lifting
- 4 steering modes: independent front, combination, crab, and rear independent
- 4 link rear suspension with optional hydro-gas suspension
- Modular counterweight designed for multiple transport and lift scenarios

